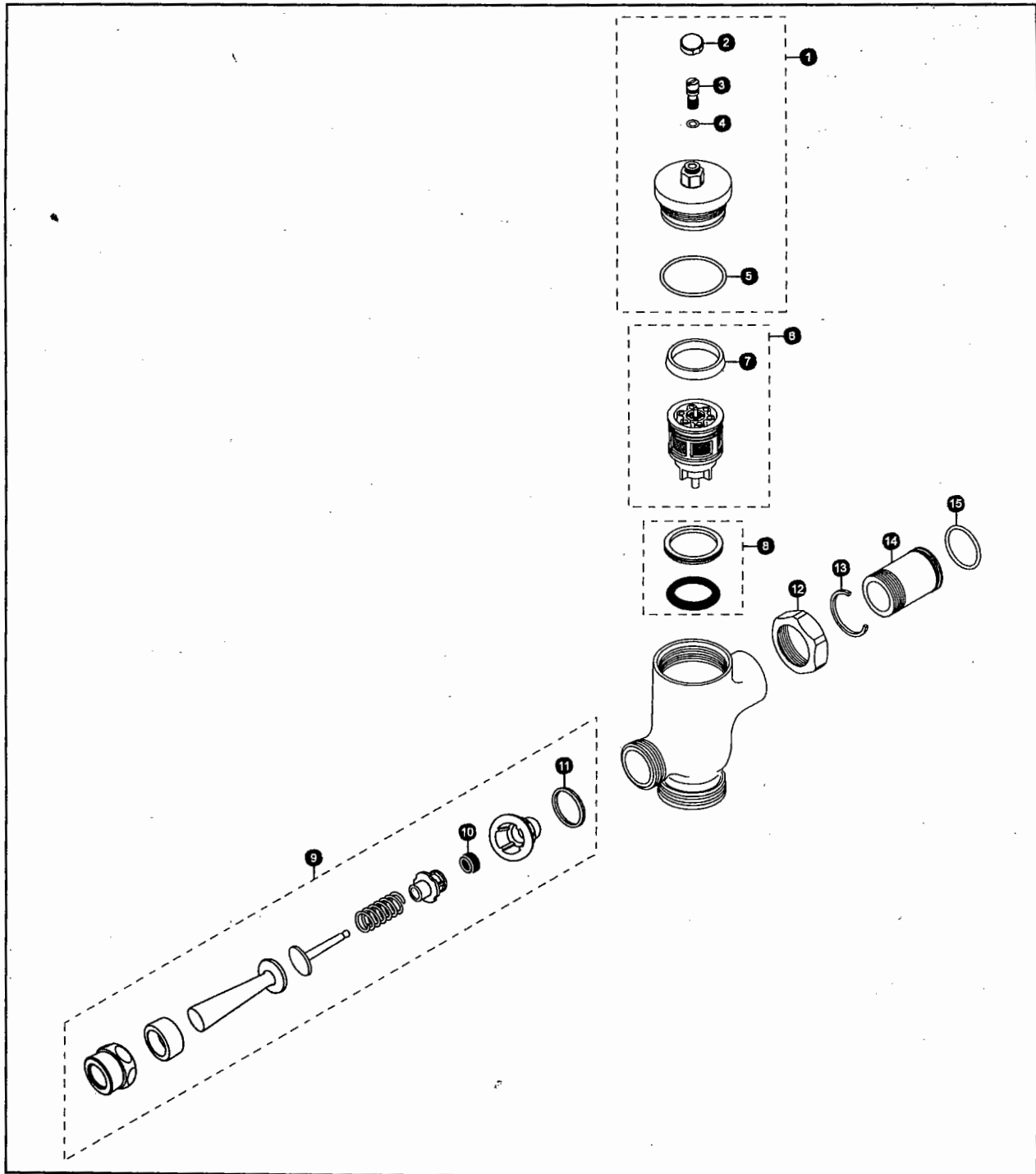


TMT1NNC
TMT1NNC-32

Manual Toilet Flush Valve, Exposed - 1.6 GPF
Non-Hold Open



Reliance Commercial Line

TMT1NNC Series

TMT1NNC
TMT1NNC-32

Manual Toilet Flush Valve, Exposed - 1.6 GPF Non-Hold Open

| No. | Part Number | Description | Qty | Price | No. | Part Number | Description | Qty | Price |
|-----|-------------|------------------------------|-----|---------|--|------------------------------------|-------------|---------|-------|
| 1 | TH305SV117 | Valve Cover Set (1.6 GPF) | 1 | | Vacuum Breaker Sets | | | | |
| 2 | TH305SV108 | Screw Cap (MFV & Angle Stop) | 1 | \$4.16 | VB9CP-32 | Exposed - Top Spud (1-1/2" Outlet) | 1 | \$54.00 | |
| 3 | TH305SV110 | Adjustment Screws (Toilet) | 10 | \$31.00 | Note: For additional information, refer to the individual vacuum breaker parts sheets. | | | | |
| 4 | TH305SV111 | O-Rings (Cap Screw) | 10 | \$5.20 | | | | | |
| 5 | TH305SV112 | O-Rings (Valve Guide) | 10 | \$7.28 | | | | | |
| 6 | TH323V100 | Piston Assembly (1.6 GPF) | 1 | \$34.00 | | | | | |
| 7 | TH305SV123 | U-Packing (For Piston) | 10 | | | | | | |
| 8 | TH321S | Seat Packing Set | 1 | \$5.20 | | | | | |
| 9 | TH305S | Lever Assembly - MFV | 1 | \$14.56 | | | | | |
| 10 | TH302RV100 | Gaskets (U-Packing) | 10 | \$6.24 | | | | | |
| 11 | TH305SV104 | Fiber Washers | 10 | \$8.32 | | | | | |
| 12 | TH305SV113 | Nut | 1 | \$7.28 | | | | | |
| 13 | TH305SV105 | Locking Rings | 10 | \$10.40 | | | | | |
| 14 | TH305SV114 | Tail Piece | 1 | \$11.44 | | | | | |
| 15 | TH305SV106 | O-Rings (Tail Piece) | 10 | \$5.20 | | | | | |

Model Explanation

T - Fitting
M - Manual
T - Toilet 1.6
1 - Exposed
N - Non-Hold Open
N - Neutral Rough-In
C - Chrome Finish
3 - 1-1/2" Outlet
2 - Top Spud

TOTO®

Perfection by Design® Author - Christopher Weber

January 2005