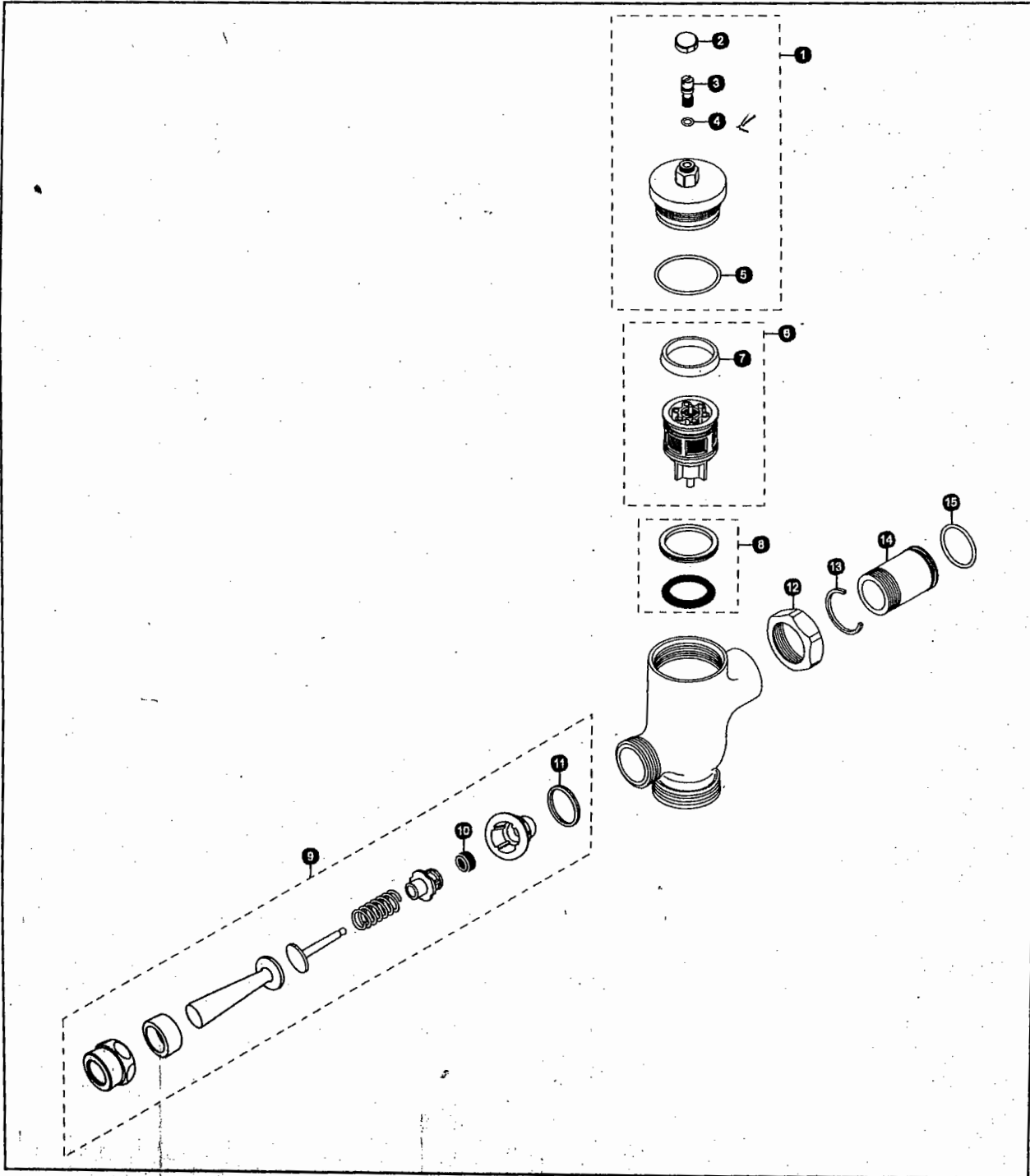


**Reliance Commercial Line**

**TMW1NNC Series**

TMW1NNC  
TMW1NNC-32

**Manual Toilet Flush Valve, Exposed - 3.5 GPF  
Non-Hold Open**



**TOTO**<sup>®</sup>  
Perfection by Design<sup>®</sup>

Author - Christopher Weber

January 2005

# Reliance Commercial Line

# TMW1NNC Series

TMW1NNC  
TMW1NNC-32

## Manual Toilet Flush Valve, Exposed - 3.5 GPF Non-Hold Open

No.	Part Number	Description	Qty	Price	No.	Part Number	Description	Qty	Price
1	TH305SV118	Valve Cover Set (3.5 GPF)	1	\$52.00	<b>Vacuum Breaker Sets</b>				
2	TH305SV108	Screw Cap (MFV & Angle Stop)	1	\$4.16	VB9CP-32	Exposed - Top Spud (1-1/2" Outlet)	1	\$54.00	
3	TH305SV110	Adjustment Screws (Toilet)	10	\$31.00	Note: For additional information, refer to the individual vacuum breaker parts sheets.				
4	TH305SV111	O-Rings (Cap Screw)	10	\$5.20					
5	TH305SV112	O-Rings (Valve Guide)	10	\$7.28					
6	TH323V101	Piston Assembly (3.5 GPF)	1	\$33.00					
7	TH305SV123	U-Packing (For Piston)	10						
8	TH321S	Seat Packing Set	1	\$5.20					
9	TH305S	Lever Assembly - MFV	1	\$14.66					
10	TH302RV100	Gaskets (U-Packing)	10	\$6.24					
11	TH305SV104	Fiber Washers	10	\$8.32					
12	TH305SV113	Nut	1	\$7.28					
13	TH305SV105	Locking Rings	10	\$10.40					
14	TH305SV114	Tail Piece	1	\$11.44					
15	TH305SV106	O-Rings (Tail Piece)	10	\$5.20					

### Model Explanation

T - Fitting  
M - Manual  
W - Toilet 3.5  
1 - Exposed  
N - Non-Hold Open  
N - Neutral Rough-In  
C - Chrome Finish  
3 - 1-1/2" Outlet  
2 - Top Spud

**TOTO**<sup>®</sup>  
Perfection by Design<sup>®</sup>

Author - Christopher Weber

January 2005