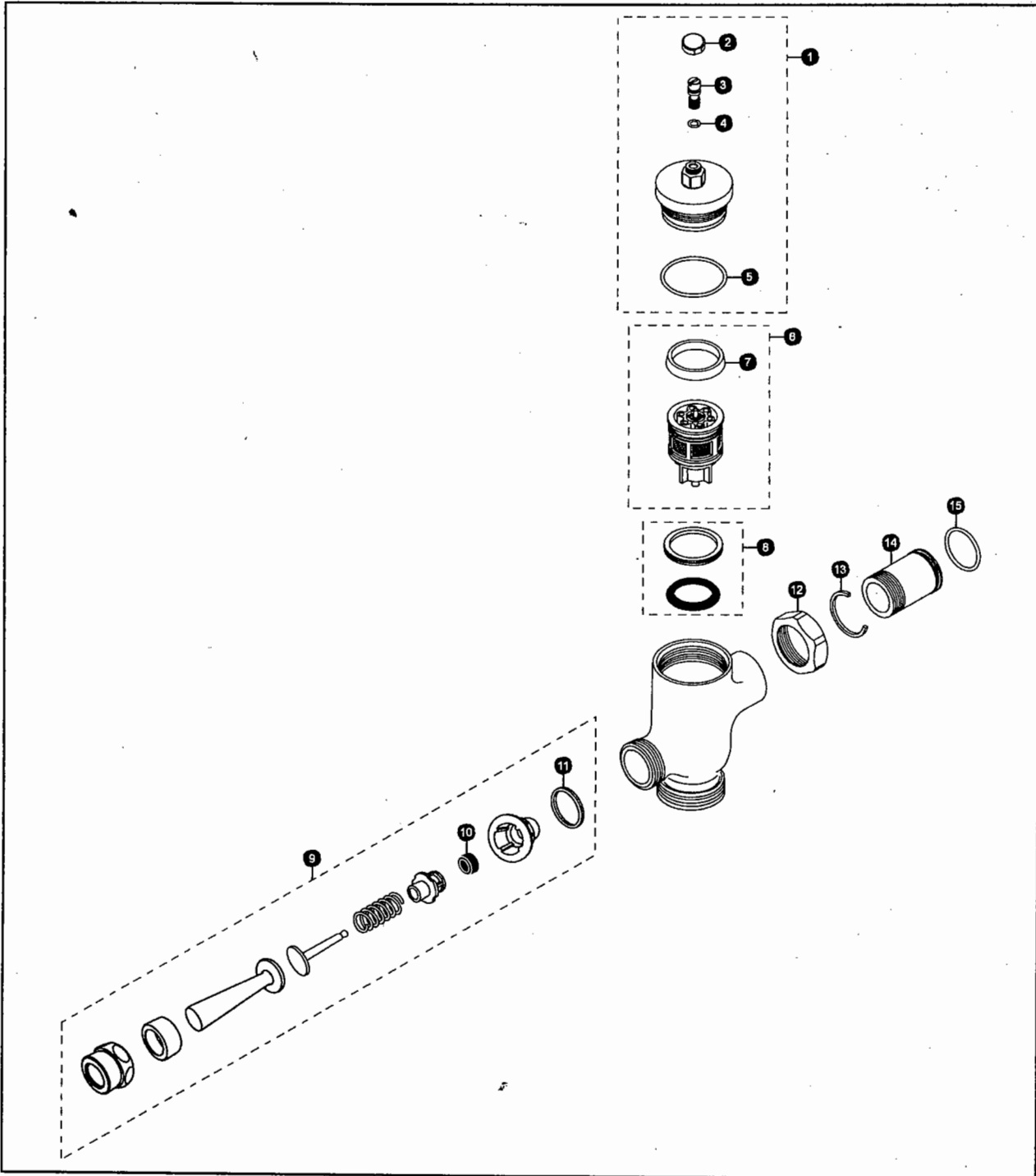


TMU1NNC
TMU1NNC-32

Manual Urinal Flush Valve, Exposed - 1.0 GPF
Non-Hold Open



Reliance Commercial Line

TMU1NNC Series

TMU1NNC
TMU1NNC-32

Manual Urinal Flush Valve, Exposed - 1.0 GPF Non-Hold Open

No.	Part Number	Description	Qty	Price	No.	Part Number	Description	Qty	Price
1	TH305SV119	Valve Cover Set (1.0 GPF)	1	\$44.00	Vacuum Breaker Sets				
2	TH305SV108	Screw Cap (MFV & Angle Stop)	1	\$4.16	VB9CP-12	Exposed - Top Spud (3/4" Outlet)	1	\$54.00	
3	TH305SV110	Adjustment Screws (Toilet)	10	\$31.00	VB9CP-22	Exposed - Top Spud (1-1/4" Outlet)	1	\$54.00	
4	TH305SV111	O-Rings (Cap Screw)	10	\$5.20	Note: For additional information, refer to the individual vacuum breaker parts sheets.				
5	TH305SV112	O-Rings (Valve Guide)	10	\$7.28					
6	TH323V102	Piston Assembly (1.0 GPF)	1	\$32.00					
7	TH305SV123	U-Packing (For Piston)	10						
8	TH321S	Seat Packing Set	1	\$5.20					
9	TH305S	Lever Assembly - MFV	1	\$14.56					
10	TH302RV100	Gaskets (U-Packing)	10	\$6.24					
11	TH305SV104	Fiber Washers	10	\$8.32					
12	TH305SV113	Nut	1	\$7.28					
13	TH305SV105	Locking Rings	10	\$10.40					
14	TH305SV114	Tail Piece	1	\$11.44					
15	TH305SV106	O-Rings (Tail Piece)	10	\$5.20					

Model Explanation

T - Fitting	T - Fitting
M - Manual	M - Manual
U - Urinal 1.0	U - Urinal 1.0
1 - Exposed	1 - Exposed
N - Non-Hold Open	N - Non-Hold Open
N - Neutral Rough-In	N - Neutral Rough-In
C - Chrome Finish	C - Chrome Finish
R - Revision	R - Revision
1 - 3/4" Outlet	2 - 1-1/4" Outlet
2 - Top Spud	2 - Top Spud

TOTO[®]
Perfection by Design[®]

Author - Christopher Weber

January 2005