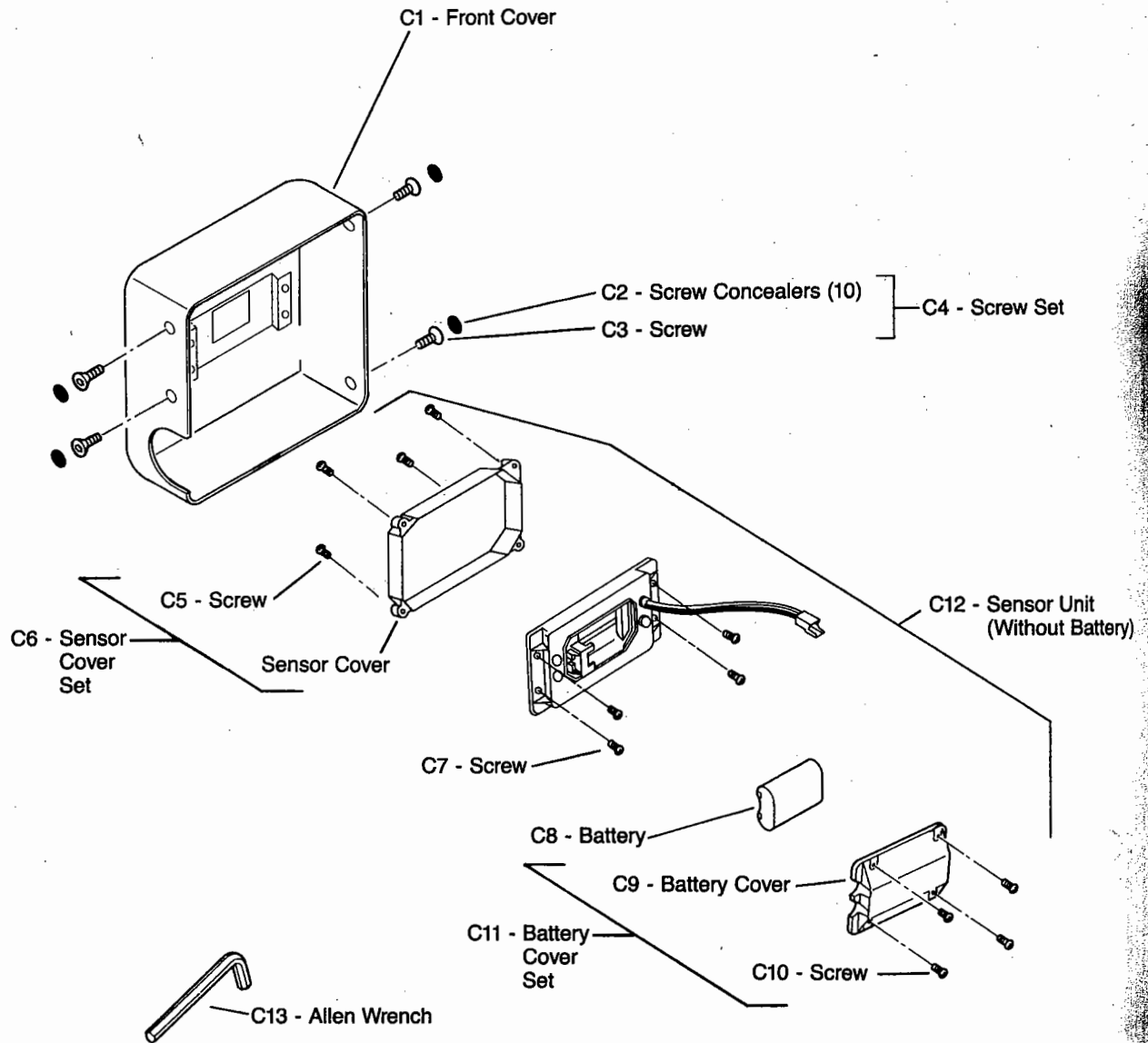


To order items on this page — full catalog number requires prefix

**MODEL: TEA90DV18**

**SENSOR PARTS**

**(C)TOTO®**



NO.	ITEM NO.	DESCRIPTION	QTY.	NO.	ITEM NO.	DESCRIPTION	QTY.
C1	TH559EDV18	FRONT COVER	1	C8	57071	BATTERY	1
C2	04021T2	SCREW CONCEALERS	10	C9	84069NT4	BATTERY COVER	1
C3	61153RT18	SCREW	1	C10	61135	SCREW	1
C4	TH559EDV26	SCREW SETS	4 EA	C11	TH559EDV27	BATTERY COVER SET (C9 + C10)	1 SET
C5	61218	SCREW (FOR SENSOR COVER)	1	C12	TH559EDV20	SENSOR UNIT (WITHOUT BATTERY)	1 SET
C6	TH559EDV21	SENSOR COVER SET	1 SET	C13	85005T5	ALLEN WRENCH	1
C7	611221	SCREW (FOR SENSOR)	1				

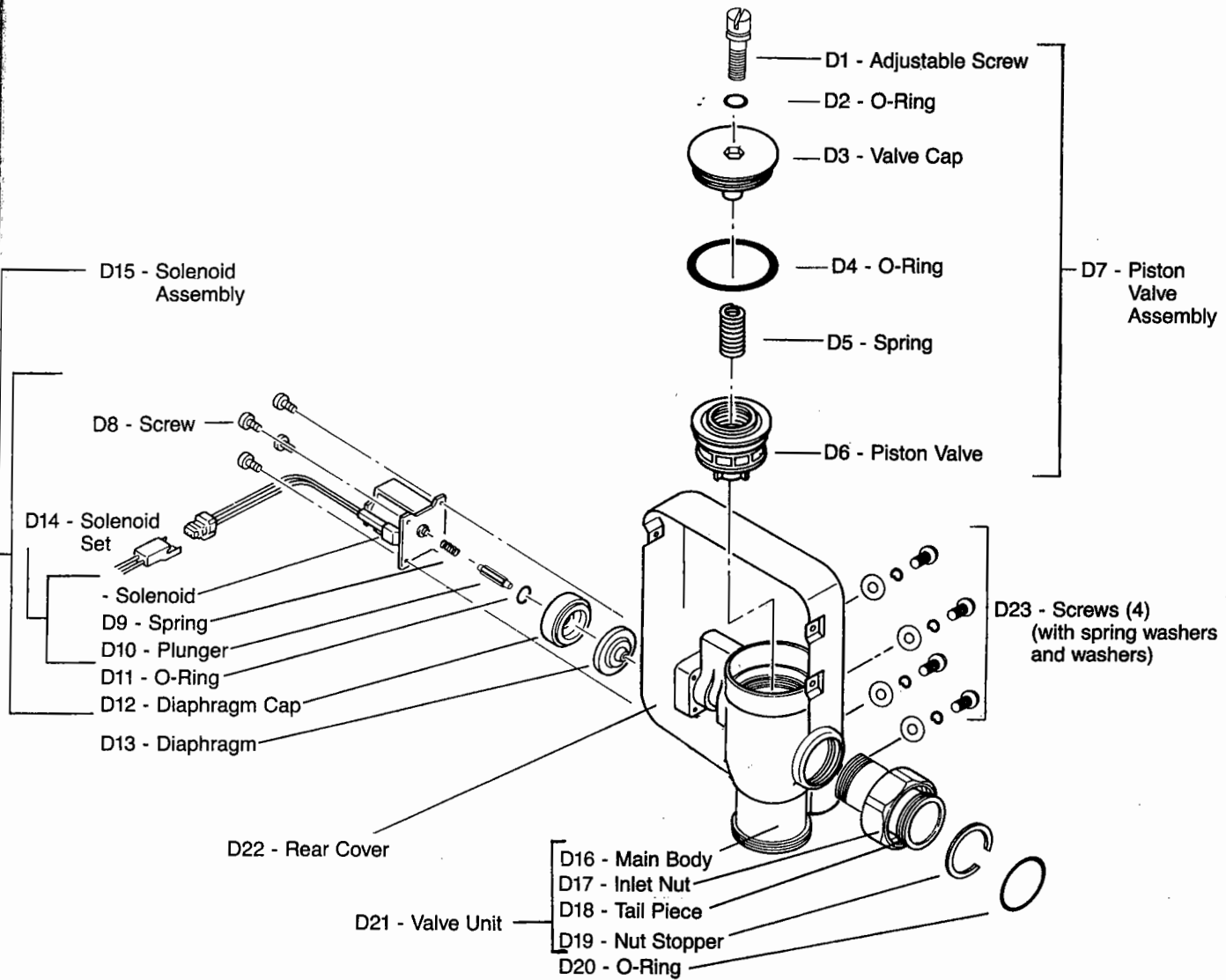
To order items on this page — full catalog number requires prefix

**T O T**

**MODEL: TEA90DV18**

**VALVE PARTS**

**(D) TOTO®**



NO.	ITEM NO.	DESCRIPTION	QTY.	NO.	ITEM NO.	DESCRIPTION	QTY.
D1	62181	ADJUSTABLE SCREW	1	D13	TH559EDV23	DIAPHRAGM	1
D2	91235HT4	O-RING	1	D14	TH559EDV51	SOLENOID SET (SOLENOID + D9 + D10)	1 SET
D3	17488T1	VALVE CAP	1	D15	TH559EDV22	SOLENOID ASSEMBLY (D8-D12)	1 SET
D4	91615SNT2	O-RING	1	D16	11950T3R	MAIN BODY	1
D5	64147	SPRING	1	D17	22052T8	INLET NUT	1
D6	TH559EDV50	PISTON VALVE	1	D18	14452T34R	TAIL PIECE	1
D7	TH559EDV25	PISTON VALVE ASSEMBLY (D1-D6)	1 SET	D19	66359T1	NUT STOPPER	1
D8	611221	SCREW	1	D20	TH559EDV28	O-RING	1
D9	64162	SPRING	1	D21	TH559EDV24	VALVE UNIT (D16-D19)	1 SET
D10	57064	PLUNGER	1	D22	TH559EDV19	REAR COVER	1
D11	93062H	O-RING (FOR DIAPHRAGM CAP)	1	D23	TH559EDV26	SCREWS	4 EA
D12	17233NT3R	DIAPHRAGM CAP	1				