

JUNIOR POWER CABLE FEED

Parts List and Diagrams

(For Sewerooter Junior & Sewerooter T-3)

| CAT. NO. | DESCRIPTION | CAT. NO. | DESCRIPTION |
|------------|------------------------------------|-------------|-------------------------------------|
| PO-JR/GT | JR Power Cable Feed and Guide Tube | PO-JR 400 | Bottom Roller Assembly |
| PO-JR 101 | Feed Body | PO-JR 410 | Bottom Carrier Only |
| PO-JR 101A | Spout | PO-JR 420 | Swing Pin |
| PO-JR 101B | Guide Clip | PO-JR 425 | Bottom Roller Shaft |
| PO-JR-102 | Knob | PO-JR 450 | Bottom Roller with Bearing |
| PO-JR 200 | Top Roller Assembly | PO-JR 510 | Retaining Ring |
| PO-JR 210 | Top Carrier Only | PO-JR 530 | Thrust Bearing & Races |
| PO-JR 220 | Swing Pin | PO-JR 601 | Feed Control Disc with Lever & Knob |
| PO-JR 225 | Feed Roller Shaft | PO-JR 601A | Lever & Knob |
| PO-JR 250 | Feed Roller with Bearing | PO-JR 601B | Lifting Spring & Screw |
| PO-JR 301 | Feed Pressure Knob | PO-JR 635 | Wave Washer |
| PO-JR 301A | Limiting Nut | PO-JR 640 | Feed Control Retaining Cover |
| PO-JR 315 | Pressure Spring | PO-JR 641 | Retaining Cover Screws (3) |
| PO-JR 330 | Ball Bearing | PO-JR 703 | Set of Rollers (3) |
| PO-JR 331 | Ball Bearing Holder | PO-JR DECAL | Set of Safety Decals |
| PO-JR 340 | Top Cover | JR-GT | Guide Tube for JR |
| PO-JR 341 | Cover Screws & Washers (3) | | |

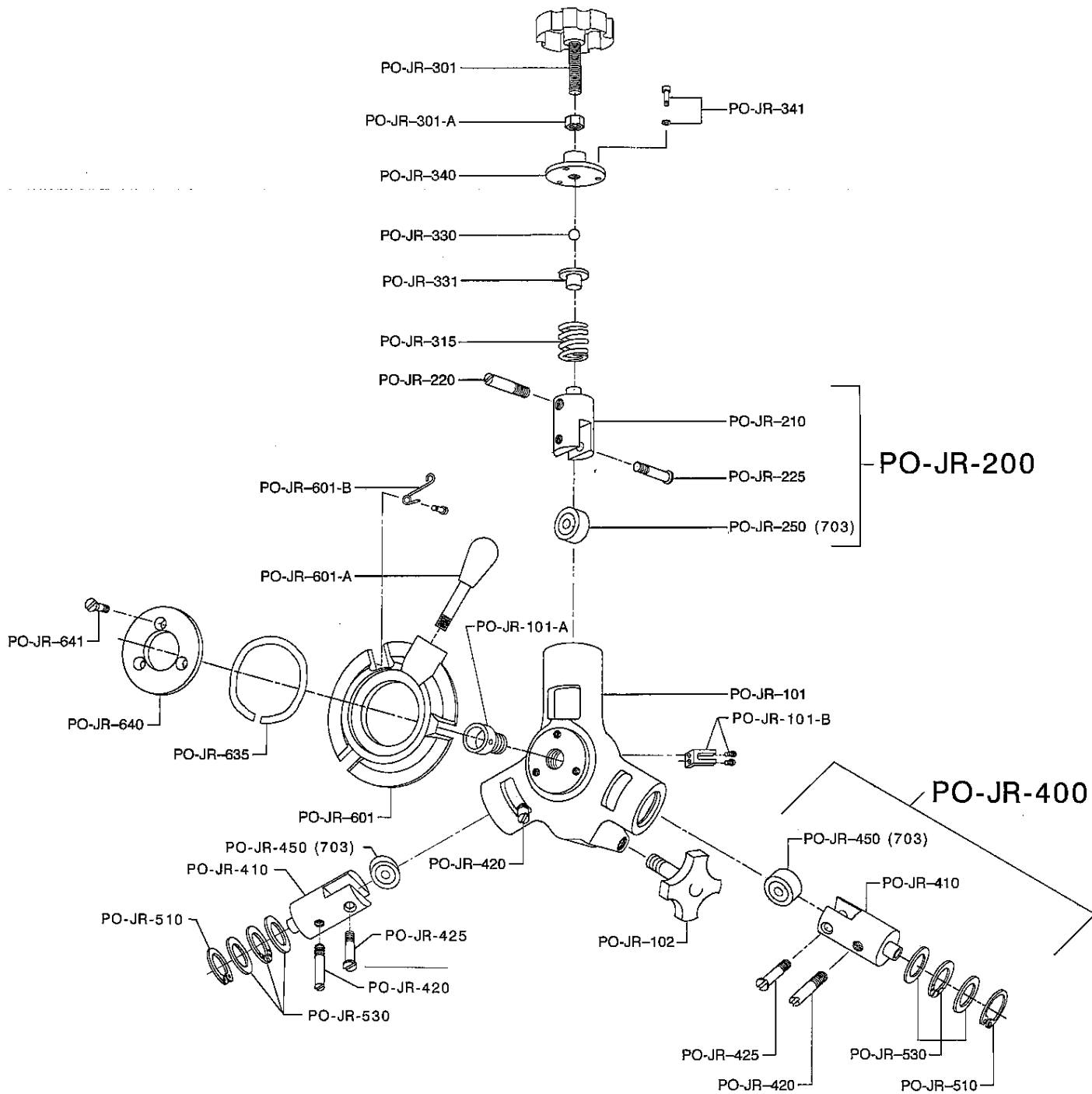
General Wire Spring Co.

1101 Thompson Avenue

412/771-6300

McKees Rocks, PA 15136 U.S.A.

JUNIOR POWER CABLE FEED SCHEMATIC DIAGRAM



IMPORTANT: When ordering, give Serial Number of Machine.